



2022
Annual
Report



Our mission is to surround students with a community of support, empowering them to stay in school and achieve in life.



Communities
In Schools®

Houston

Letter From the President and CEO



In the 43 years Communities In Schools of Houston has been working alongside students, parents and teachers, we have been honored to be part of countless stories of success.

Due to your critical support, our students continue to excel in 2021-2022 despite a third school year impacted by the pandemic.

Omar and I are so very proud to celebrate the accomplishments of our students with you. We want to call attention to the impressive outcomes of our students on page 5. The incredible stories of success within each of these hard-earned metrics are vast and remarkable. I am excited for you to read about Jaden on page 11. We are so proud of his hard work and determination to overcome hardships, learn how to talk through his feelings, turn his grades around and dream big for the future.

Another notable story this year was receiving the largest donation ever gifted to CIS of Houston. Being selected by philanthropist

MacKenzie Scott to receive \$13M was a course-altering moment for our organization. Her gift came with intense responsibility and a simple, but rigorous ask: use the gift for greatest good for students. As with every donation, regardless of amount, we take that charge very seriously. Together, our Board and Management Team developed an initial plan for the highest and best use of the donation that aligns with our agency's strategic priorities. The donation will be utilized over an eight-year timeframe with a focus on Students, Staff and Sustainability, with the largest percentage of funds going toward Expansion of Service Delivery Capacity – keeping students at the center.

It is because of supporters like you that the stories of Jaden and MacKenzie Scott are even possible! Since 1979, local donors have invested in CIS students. Today, those students are now alumni, leaders of tomorrow: teachers, principals, lawyers, engineers, nurses, and parents caring for the next generation. You, along with all CIS supporters, have continuously cared about Houston students and have believed in the value of CIS evidence-based, campus-based supports.

Thanks to you, our students have access to dedicated CIS professionals on their best days and during their hardest moments. That enduring commitment has been the foundation of our organizational success and the accomplishments of our students.

This generation of students in classrooms today still need you. We continue to be grateful knowing you will persist in this life-affirming work with us.

With deep gratitude,

Omar Reid

President of the Board

Lisa Descant, LPC-S, LMFT-S

Chief Executive Officer

What We Do

Communities In Schools of Houston (CIS) is an organization that empowers every student, regardless of race, zip code, or socioeconomic background, to realize their potential in school and beyond. CIS places at least one full-time staff member on each partner campus to deliver direct services and to connect students and families with needed community resources.

Because CIS believes in the power of relationships, we provide on-campus integrated student supports that empower students to succeed in school and achieve in life.

We collaborate with more than 300 community partners each year to help students see, confront, and overcome the barriers that stand between them and a brighter future. CIS works alongside students, families, alumni, and stakeholders to create meaningful change that impacts lives today. Together, we will build an equitable path to education for future generations.



2021-2022 Services Include

Supportive guidance and Counseling

Conflict resolution and Crisis intervention

Basic needs support

Parent engagement and Home visits

Academic support

College Readiness and Career Exploration

Field trips and Enrichment activities

The Results of our Work

CIS Mental Health Professionals served 6,071 students and CIS Mental Health Partners served 493 students on 94 campuses, totaling 22,000 hours of mental health support for CIS students

Outcomes

CIS case-managed students were very successful:

99% in grades 7 through 12 stayed in school

96% of seniors graduated

84% showed marked improvement in academics, attendance, and/or behavior

96% were promoted to the next grade level

COLLEGE OUTCOMES

70% re-enrollment, transfer and graduation rate

2.7 average GPA

3,404 credits earned

Impact

160,750 students served through campus-wide events

34,186 students served through targeted intervention services

9,590 students received intensive case-management services

240,633 hours of intervention services in the Six Core Components:

- Supportive Guidance and Counseling
- Health and Human Services
- Parent and Family Engagement
- Enrichment Activities
- Academic Support
- College and Career Readiness

CIS conducted 587 home visits, handled 4,057 crisis situations, and made 430,422 agency referrals.

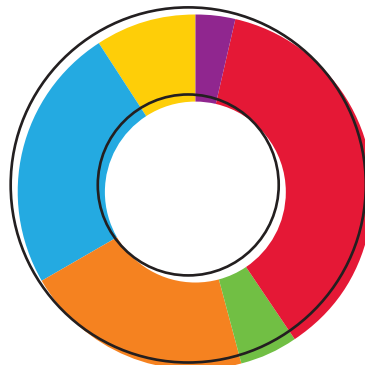
Where We Serve 2021-2022 School Year



Schools

	ALDINE ISD	7
	ALIEF ISD	41
	FORT BEND ISD	4
	HOUSTON ISD	45
	LONE STAR COLLEGE CAMPUSES	15
	SOUTHWEST CHARTER SCHOOLS	4
	SPRING ISD	10
	SPRING BRANCH ISD	38
	TEXAS CONNECTIONS ACADEMY	2

- PRE-K 6
- ELEMENTARY SCHOOL 61
- INTERMEDIATE/OTHER 9
- MIDDLE SCHOOL 34
- HIGH SCHOOL 40
- COLLEGE 15



Who We Serve 2021-2022 School Year

The students we serve face a myriad of obstacles such as poverty, lack of access to resources, systemic issues of equity, emotional trauma, and more.

At Communities In Schools of Houston we see potential in ALL students and work to advocate for students and create access to resources and opportunities that help them reach the bright futures they each deserve.



Student Demographics

**Based on CIS PreK-12th grade Case Managed Students*

64% HISPANIC/LATINO

27% BLACK

5% WHITE

3% ASIAN

1% OTHER

59% FEMALE

41% MALE

98% RECEIVED FREE/
REDUCED LUNCH

61% RECEIVED PUBLIC
ASSISTANCE

39% HAD LIMITED
ENGLISH PROFICIENCY

15% WERE INVOLVED IN A
FAMILY CONFLICT OR
CRISIS

"I've learned from CIS that no matter where I am, someone will be there for me. No matter where I am in Texas there will be a CIS there willing to help. Wherever I am, if I am sad, someone will help me."

STEVEN

Strategic Plan

The end of the 2022 school year marked the completion of a 3-year strategic planning period for Communities In Schools of Houston. We are thrilled to share the great strides we have made to advance our impact across Houston, as well as provide insight to the goals of our current 5-year plan for 2022-2027.

Recent Accomplishments:

- Ensured CIS students are equipped to achieve in life; 98% of CIS seniors graduated from high school with 84% having plans for post-secondary education
- Expanded the number of CIS campuses offering mental health and wellness services by at least 15%
- Implemented a thoughtful financial investment in the talent and technology needed to advance our mission.
- Gained a growing, sustainable, and diversified private/public funding sources to support expansion and salary increases.
- Increased the number and quality of strong partnerships in the community and increased number of volunteers.
- CIS Board exemplified best practices, increased engagement and welcomed 6 new members
- Invested time and resources to strengthen our organization's culture by launching a DEI Committee along with other steps to foster an inclusive, equitable climate

Looking Ahead—Goals for the Next 5 Years:

- Increase our impact by serving more campuses in existing partner districts seeking additional support and by deepening staffing and services on campuses with the greatest needs
- Leverage all six components of our integrated student support model to equitably support students' efforts to Achieve in Life
- Communicate effectively with key audiences so that our purpose, work, and impact are widely known and valued
- Be a workplace of choice, as evidenced by ability to attract, develop, and retain high-performing staff
- Remain financially sustainable with diversified sources of funding
- Embody best practices in governance to advance our mission



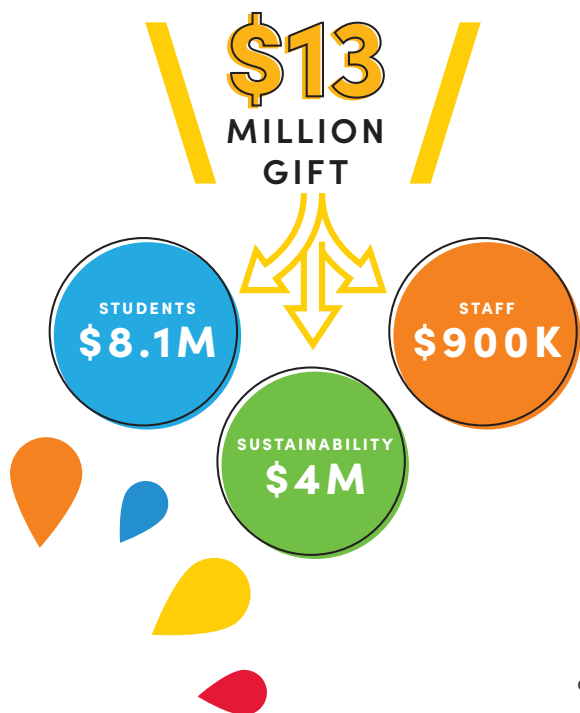
A Game-Changing Gift from MacKenzie Scott for Houston Students

After conducting a well-researched, multi-year investigative process, MacKenzie Scott and her team chose to award a historic, unrestricted gift of \$13 million to CIS of Houston.

Following months of planning with our Board, Finance and Management teams, CIS has developed a strategy for bold growth and sustainability to reach more students and change more lives across Houston.

8 Year Plan

Target Areas Allocation Strategy



Delivering Impact

STUDENTS



Expanding Service Delivery Capacity

Expand into additional campuses to serve more students

Target CIS campuses to move from one-person student services model to a two-person model

Increase campus-based discretionary budgets to meet the basic needs of students

STAFF



Ensure our position in the competitive employment marketplace by investing in exceptional staff, both now and for the long-term

Salary increases

Enhanced benefits

SUSTAINABILITY



Create infrastructure to sustain and grow philanthropic revenue

Expand Development capacity to grow fundraising

Establish and manage a revenue-generating reserve fund

Our Programs

College Initiative

Young adults who face a myriad of challenges continue to need support even after they receive their high school diploma. **Recognizing the need for support transitioning into college and career, as well as continued social and emotional support, CIS piloted the College Initiative.**

The College Initiative addresses the national problem of low college completion rates, and aligns with our mission to empower students to stay in school and achieve in life.

CIS has extended services to **16 Lone Star College campuses** over the last few school years. By removing some of the social, emotional, and basic needs that serve as barriers for students we are able to increase their persistence and completion rates.

Mental Health Initiative

The CIS Mental Health Initiative has grown to encompass a three-part program of mental health support. (1) **Campus-based mental health professionals from CIS**, the (2) **CIS Mobile Mental Health Team**, and our (3) **Partner mental health agencies** provide mental health counseling, facilitate support groups, and make referrals to students and their parents. Interventions target conflict in the home, grief and loss, verbal or physical aggression, anxiety, depression, identity issues, suspected drug/alcohol use, and unusual behavior.



Summer Internships/Externships

CIS/THE HOUSTON BAR ASSOCIATION (HBA) SUMMER LEGAL INTERNSHIPS

Law firms, corporate legal departments, and public-interest agencies provided internships to high school juniors and seniors. The students attended a job readiness program and were mentored by local attorneys for eight weeks. Students experienced sophisticated work environments in downtown Houston, expanded their career opportunities, and broadened their vision of success, as well as experienced a mock trial.

THE CIS NURSING EXTERNSHIP PROGRAM

Houston Methodist Hospital provided high school seniors with an 8-week Patient Care Assistant (PCA) Summer Externship Program upon graduation, which required a 40-hour workweek commitment. **Smithwood Medical Institute** evening school was provided to seniors in high schools for the Certified Nursing Assistant (CNA) certification, qualifying them to be employed in the nursing field.

Project MOVE Dental

In partnership with University of Texas (UT) Dental School, CIS students were provided free preventive and restorative dental care and oral health presentations. Oral health procedures were performed at the **University of Texas Dental School** where students were provided emergency restorative care as well as preventive care in the areas of dental cleaning, x-rays, fluoride treatment, and sealants. UT Dental School hosted Give Kids a Smile day to provide free dental care to underserved children from the Houston community for the first time since 2019 when the COVID pandemic put the program on pause.

Unlocking Potential and Empowering Students for Success

Jaden

CIS student, Jaden, first began working with CIS in middle school. There were often times when he did not have enough food at home and there were other challenges there, too. He knew he could turn to CIS whenever he needed something or a safe space to talk. CIS remained a constant in Jaden's life even when he got to high school. Unfortunately, various tragedies and difficult experiences led Jaden to getting involved with drugs and alcohol and his grades fell. Feeling discouraged but determined, Jaden decided to begin weekly counseling with the CIS Mental Health Specialist at his school where he was able to work with CIS on getting sober. "My grades went to all passing, and I did not feel controlled and scared by my memories. I started to see a future for myself beyond high school. I know I wouldn't be where I am today without CIS. They help students like myself with hard struggles – CIS gave me someone to talk to every day."

Ashanti

Recent CIS graduate, Ashanti, recalls facing many barriers on her journey to graduation such as having to get a job to help support her family. She was grateful to have CIS to turn to for support and guidance throughout her time at Sterling Aviation Early College High School in Houston ISD. Ashanti said, "CIS helped me out by giving me options. Before CIS, my plans were to graduate and that was going to be it. With CIS, I have somewhere to start after graduation." Ashanti hopes to be a nurse one day and credits CIS for introducing her to post-graduation possibilities.

Prior to graduating, Ashanti was looking forward to participating in the CIS Nursing Externship Program: "I am ready to go out into the medical field. My plans are to start the internship program, and once I finish, I will enroll in a 2-year college course to become a registered nurse."

"I would like to thank everyone working for the Communities In Schools organization. I would like to thank you for giving teens like myself an opportunity to be someone in this world. You guys give us the opportunity to not be another statistic in our society. We now have the option to be successful and leave a print in our communities."

ASHANTI, CIS GRADUATE

Commitment to Diversity, Equity, and Inclusion



DEI Belief Statement

Everybody's welcome. At Communities In Schools of Houston, diversity, equity, inclusion and belonging are the core of our DNA. Together, we nurture an inclusive, empathetic culture that celebrates the differences brought by our students, families, alumni, board members, employees, partners and communities we serve. Our diversity fuels our innovation, strengthening our commitment to **build an equitable path to education for future generations.**

Partners

SCHOOL PARTNERS



SUPPORTIVE GUIDANCE & COUNSELING



ACADEMIC SUPPORT



PARENT & FAMILY ENGAGEMENT



HEALTH & HUMAN SERVICES



COLLEGE & CAREER READINESS



ENRICHMENT ACTIVITIES



Board of Directors



PRESIDENT EMERITUS

Bob G. Gower*+

PRESIDENT

Omar C. Reid*

VICE PRESIDENT

William R. Hurt*

SECRETARY

Pat Rosenberg*

TREASURER

W. Todd Huskinson*

MEMBERS AT LARGE

Stephanie Arnold

Susan Barnes*

Cody Biller

Gina Carroll*

Margot Cater+

Charles W. Duncan III+

Phani Durbhakula

Jennifer Espey*

Joe Foster*

Allison Gower*

Anne Graubart*

Robert G. Gwin

Rick Hamman

Jacquie Hawkins*

Benjamin Heard*

Maynard Holt

Bill M. Kroger*

Klinka Lollar+

Cathy C. Malone*

Melissa Matsu

Kirby Cohn McCool

Jo Ann McLaughlin+

David Mendoza

Brittany Opeloye

Jill Ramshaw*

Jan Redford

David Sambrooks*

Leo Sayavedra*

Jarett Simon

Larry Sorto

Suzanne Stiles

Judy Tate

Chantal D. Veevaete*

William Walker

Linda Gale White*+

Elizabeth Young*

CHIEF EXECUTIVE OFFICER

Lisa Descant

GENERAL COUNSEL

Meghan McElvy
Baker Botts LLP

ADVISORY BOARD

Martha Armstrong

Charles Butt
H-E-B

Garnet Coleman
Texas State Legislature

Rodney Ellis
Harris County Precinct One

Felix Fraga
BakerRipley

Anna G. James

Christy Jennings

Sheila Jackson Lee
U.S. Legislature

Barry M. Lewis
Goldeneye, Inc.

Elizabeth B. Wareing

John Eddie Williams, Jr.

Marsherria Wilson
Wilson Financial Group

+ Life Member
* Executive Board

Financials

Communities In Schools of Houston demonstrates a true public/private partnership. CIS total revenue comes from public funds, specifically support from school districts, state of Texas and Harris County, as well as from the generosity of foundations, corporations, and individual donors.

CIS has a strong fiscal responsibility, with more than 87 cents of every dollar going directly to program services.

**2021-2022
OPERATING
REVENUE:**

\$34,632,258.20

PUBLIC: \$12,448,987.25 (36%)

Funds from school districts, state of Texas, Harris County, and the City of Houston

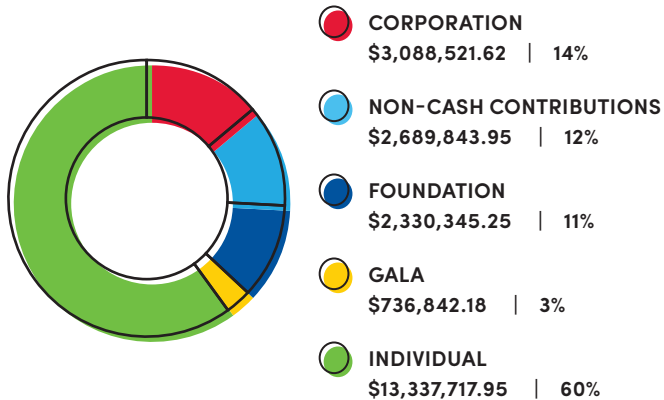
PRIVATE: \$22,183,270.95 (64%)

Funds from foundations, corporations and individual donors

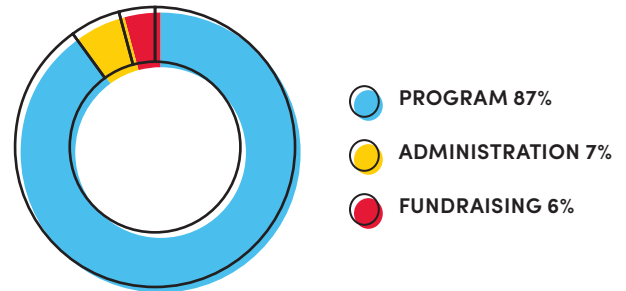
EXPENSES: \$20,485,399.70

Net Gain/(Loss) = \$14,146,858.50*

Private Revenue 2021-2022



Expenses 2021-2022



*large gain due to MacKenzie Scott donation

Thank You for Your Support

\$1,000,000+

MacKenzie Scott

\$250,000+

The Brown Foundation, Inc.
Houston Food Bank*
United Way of Greater Houston

\$100,000 - 249,999

Heather Burkhart*
Wayne Duddlesten Foundation
John S. Dunn Foundation
Hauck Charitable Foundation
Hess Signature Education Fund
Ms. Delores Jones*
The Lyons Foundation
The Powell Foundation
The Rockwell Fund, Inc.
Vivian L. Smith Foundation

\$50,000 - \$99,999

Communities In Schools National
The Elkins Foundation
Halliburton
Harris County Hospital District
Healthcare and Nursing
Education Foundation
HEB Grocery Company
Klinka and John Lollar
Memorial Assistance Ministries*
The John M. O'Quinn Foundation
Phillips 66
Spring Branch Education Foundation
Judy and Charles Tate

\$25,000 - \$49,999

CenterPoint Energy, Inc.
Children's Museum of Houston*
Christ Church Cathedral*
Clayton Fund Inc.
Ashley Coolidge
Melbern G. & Susanne M. Glasscock
Foundation
Beth and Bob Gower
George and Mary Josephine Hamman
Foundation
Houston Texans Foundation
Marathon Oil Corporation
John P. McGovern Foundation
Regions Bank
Lisa and David Sambrooks

\$10,000 - \$24,999

Assistance League of Houston*
Dr. Ann Barnes and
Mr. Matthew Barnes
BCS Capital Group LLC
Callon Petroleum
Margot Cater
Chapelwood United Methodist Church
Chapelwood United Methodist Church*
Christian Community Service Center*
Clothed By Faith*
The Duncan Fund
Joseph Foster
GRITS Foundation
Bob Gwin
Houston Astros*
Houston Heights Woman's Club*
William Hurt
The Leon Jaworski Foundation

Lakewood Church*
Jack H. and William M. Light
Charitable Trust
Cathy C. Malone
Kirby Cohn McCool
Memorial High School Booster Club
Memorial High School PTA*
Memorial Middle School PTA
Montgomery County Food Bank*
Operation School Bell*
Operation Warm*
George Peterkin
Pines Presbyterian Church*
Patricia K. Rosenberg
The Saramco Foundation
Spring Branch Education Foundation*
The Stanton Foundation
Strake Foundation
Stratford PTSA
Texas Bar Foundation
United Healthcare
Susan Vaughan Foundation Inc.
The West Endowment
YMCA*
Elizabeth S. Young

\$5,000 - \$9,999

Jean and Clyde Alexander
Amegy Bank of Texas
Baker Botts L.L.P.
Bonner and George Ball
Nancy and David Beck Jr.
Birthday Bundles For Kids*
Rosanna and Myron Blalock III
Dwyannetta Coleman*
Marian and Paul Cones

\$5,000 - \$9,999 (CONTINUED)

Mary and John Craddock
The Crain Foundation
Markley Crosswell III
Sylvie and Gary Crum
Leslie and Charles Duncan III
East Spring Branch Food Pantry*
Eastern Star*
Jenny and James Elkins
Enbridge
Jennifer and Lin Espey
Exxon Mobil Corporation
First Women Junior Club*
Freewheels Houston*
Daniel Goott
Anne and Donald Graubart
The Green Tree Fund
Linda and John Griffin
Sarita and Robert Hixon
Holy Spirit Episcopal Church*
Virginia Hoops and Thomas Doggett
Houston Methodist Hospital
Megan Jamison and Peter Kaufman
Jcpenney
Elva J. Johnston Foundation
King & Spalding LLP
Kirby Corporation
Legacy Community Health
Soraya and Scott McClelland
Laura and Andrew McCullough
Family Fund
Leila and Walter Mischer
Diane and David Modesett
Gary R. Petersen
Jill Ramshaw
Renna and Jonathan Rauch
Omar C. Reid
Regina J. Rogers
Shell Matching Gifts Program
Spring Forest Middle School PTA*

Johnny Steele
Weisie and John Steen
Nancy and Edward Steves
Rebecca Triplehorn
Lynda and David Underwood
The University of Texas School of
Dentistry at Houston*
The Vaughn Foundation
Mr. and Mrs. Robert Wakefield
William Walker
Gretchen Watkins
Alicia and Robert Wickman
Patricia Lewis Zoch
Children's Foundation

\$2,000 - \$4,999

Martha A. Adger
Nani Allen*
Andrews Foundation
Stephanie and Isaac Arnold
Charles Butt
Gina and Jonathan Carroll
Jeanie and Thomas Carter, Jr.
Kevin Clark
Conway Family Foundation
Ann Cook
Louise Davis
Kit and Carl Detering, Jr.
Kate and Holbrook Dorn
East End District*
Edwards Charitable Foundation
El Mesias United Methodist Church*
Exxon Mobil Foundation
Foster Family Charitable Fund
Cathy and Ed Frank
Friends of the Phoenix
Vesta and Pedro Frommer
The Furniture Bank*
The Furniture Warehouse*
Stephanie Grant

Patricia and Wilson Griffith
Irazema and Baltazar Gutierrez*
Heidi F. Heard
Jeni and Benjamin Heard
Houston Endowment Inc.
Houston First Baptist Church*
Houston Police Department*
Barbara and Charles Hurwitz
Suzie and Larry Johnson
Deanna and Brian Jones
Harry Jones
J Squared Family Foundation
Kappa Alpha PSI Fraternity
Houston Alumni Chapter
John Knapp
Stephanie Langenstein
Laurie and Blake Liedtke
Lilys Toy Box*
Lisc Houston
Lauren Martini
Memorial Drive Presbyterian Church*
Katherine and David Miller
Ryan Morita
Amy and John Hardy Murchison
Olasky & Sinsteden
The Phoenix On Westheimer*
Sarah and Stephen Pitt
Sissy and Grady Roberts
Gloria Rodriguez*
Kathleen and John Rogers
Leo Sayavedra
Spring Branch ISD Council of PTA's*
Robin and Alexander Stuart
Taiwan Buddhist Tzu Chi Foundation*
Texas Children's Hospital*
Texas Mutual*
Topspot*
UBS Financial Services Inc.
Valley Oaks Elementary PTA*

\$2,000 - \$4,999 (CONTINUED)

Karen Van Etten*
Vinson & Elkins LLP
Vision Service Plan -
Sights for Students*
Linda and Robert Walker
Robin and John Wombwell

\$1,000 - \$1,999

Ability To Succeed Foundation
Alief-TSTA/NEA
Ally Medical Emergency Room*
Eileen Almanzar*
Meleny Ambriz*
Amegy Bank of Texas
Asian American Health Coalition DBA
Hope Clinic
Awty International School
Minnie and Raleigh Baird
Susan G. Baker
Carol and Larry Barbour
Cody Biller
Leslie and Jack Blanton, Jr.
Melissa Boswell
Louis K. Brandt
Bread of Life*
Jan Bres
Mr. Frank Brown
Cristina and Jim Buas
Linda and Scott Burdine
Nancy and Harry Burrow
Lori Calderon*
Carnival Dental & Braces*
Erin Cestero*
Christ Community Church*
Charlotte Clanton*
Cathy and Joseph Cleary, Jr.
John B. Connally IV
ConocoPhillips
Dr. Susan M. Cooley
Maureen and David Cross

Emily and Holcombe Crosswell
Elaine and Brant Croucher
Ashley Cruse
Jim Culpepper*
Carolyn and Platt Davis
Tracy Dieterich
Amanda Dikdan*
Gloria Dilley
Lisa Dillon
Gina Drda
Phani Durbhakula
East Houston Civic Club*
Martha Farish and Jose Oti
Sidney and Albert Fay
Megan Ferguson
Janet Fitzke
Wanda Foster*
Helen and Charles Fraser, Jr.
Norton Rose Fulbright
Illa and Will Gaunt
David Goldfarb
Maria J. Gomez*
Isla Goodman
Audrey and David Gow
Allison Gower
Julie and Edward Griffin
Cat and Mark Gruetzmacher
Jocelyn Harris*
Dr. Jacquie Hawkins
Kay and David Hedges, Jr.
Heights PTO*
Hess Corporation*
Elaine and Gid Hixon
R. Maynard Holt
Houston Children's Charity*
Houston Dynamo*
Brenda and Todd Huskinson
Julie Jacobson
Kane Russell Coleman Logan PC

Erin and Steven Kaplan
Nicole and Evan Katz
Anne and Thomas Kelsey
Wendy and Mavis Kelsey, Jr. Fund
Elizabeth and Bill Kroger
Gretchen and Lance Lahourcade
Chanler Langham
Erin Lanier*
Leslie and GM Byrd Larberg
Marilyn Ligon
Alexandra Lombana*
Clark Mandigo
Leslie Martinez-Silva
Stephanie McCall
Bailey McCarthy
Meghan McElvy
Memorial Drive United Methodist
Church*
Cassie and John Milam
Lauren and Jordan Mintz
Diana Morehouse
Ellen and William Morris
Jennifer and Brian Moss
Alex Munoz
Bridgette and Neel Naik
Howard Newton
Capera Norinsky
Brittany Opeloye
Jennifer Orr
Osborn Heirs Company
Bonnie and Billy Osborne
Sara Beth and Dexter Peacock
Kathleen and Townes Pressler II
Proper Footwear LLC*
Macey and Harry Reasoner
Jan and David Redford
Lillie Robertson
Lauren Salomon
Belinda and David Senneway

\$1,000 - \$1,999 (CONTINUED)

Lesley Martinez-Silva
Henry Smail
Suzanne and Adam Stiles
Linda and Dary Stone
Eloise Taussig
Betty Taylor
Nancy and Peter Thompson
Phoebe and Robert Tudor III
Chantal D. Veevaete
Cathy and Richard Vermillion, Jr.
The Victory International Church*
Jackie and Bass C. Wallace, Jr.
Wallis State Bank*
Allie Walls
Westbury Baptist Church*
Marsherria and Gerald Wilson
Maragret and Stephen Yerkovich
Carolyn and John Young

\$500 - \$999

Lucy and James Armstrong
Dr. Harriet H. Arvey
Avenue CDC*
Tolulope Bamgboye
Susan Barnes
Linda Barrow
Bayou City Fellowship*
Walter Bering
BETA Club*
Carolyn Biedenbarn
Camille Boon
Natasha Butler*
Caldwell Boudreaux Lefler Law Firm
Allison Catan*
Cathy Chapman
Bianca Clark*
Olga Cobar*
Catherine Connell
Betty and William Conner

Jack Craddock
Bill Dawson
East End Chamber of Commerce*
Jane and Gus Eifler
Carmen Escalante
William Fagan
First United Methodist Church
Kaylyn Fisher*
For Goodness Cakes*
Debby Francis
Frost Bank
Barbara and Jacko Garrett
Melanie Gibson
Halliburton Giving Choices Match
Sarah and William Hamilton
Rick Hamman
Thomas Hixon
Jahaira and Patrick Hsu
Jerry Jeanmard
Dee Jones*
Richard Kaplan
Duy-Hinh Khieu
Hinh Khieu*
Olive Anne and Tres Kleberg
Yolanda and William Knull
Natalie Krinsky
Whitney and Mark Lawson
Ben Leibman
Louise Levien
Tracy and David Livingston
Alice and. J.W. Lodge
Spencer Lodree*
Jessica Lopez*
Lynn Mason
Doris McInnes
Memorial High School PTA*
Michael's*
Ginni and Richard Mithoff
Ann and William Moss, Jr.

Laura Neuhaus
Lola Okeke
Raquel Padilla
Panera Bread Co.*
Jacke Potter
Abigail Reyes*
Kathleen Reynolds
Ronald McDonald House Charities*
Susan S. Ross
Rosa Ruiz*
Seitel Inc.*
SESCO Cement*
Larua and Michael Shannon
Sharney Foundation Inc.
Francis and Wynne Sharpe, Jr.
Dennis Siltman
Jarrett Simon
Dorothy and Gerald Smith
Janet Springer
Spring Forest Middle School PTA
James Steen
Mary and John Steen
John Tate
Rebekah Tee*
Susan Thomas*
Charlotte and Paul Tripplehorn
University of Houston Downtown*
Tobi Unrath*
Ms. K. Wells*
Linda Gale White
Susan Wienert
Donnell Williams*
Marlene and James Willis*
Lynne and Jim Wilson
Barbara Wood
Woodlands Church*
Sajida Zaidi*

*In Kind Donation



Communities
In Schools®

Houston

cishouston.org

1111 North Loop West, Suite 300 | Houston, TX 77008 | 713-654-1515

©2022 Communities In Schools of Houston